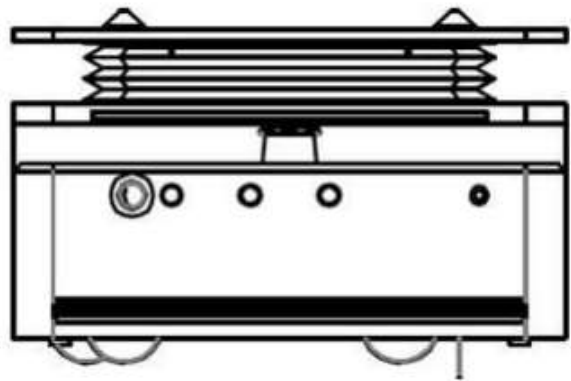
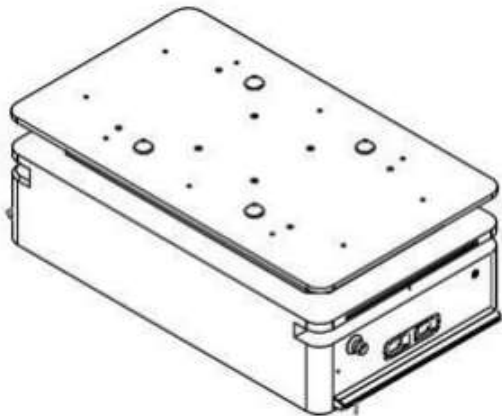
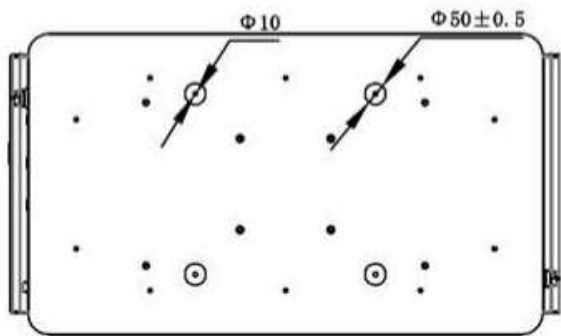
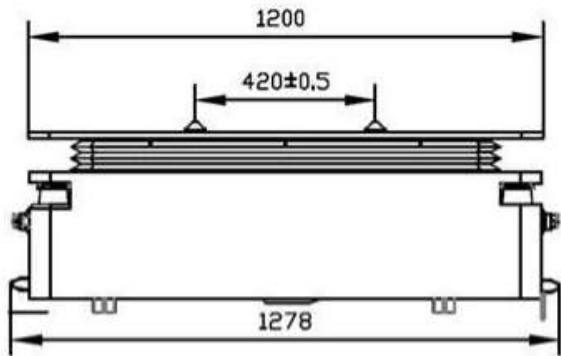
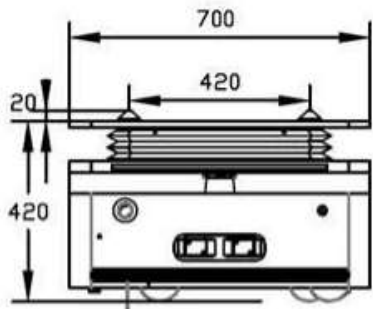


# **Under Ride Lifting Robot R1000LT**

**INS + Lidar Slam Navigation + 1000 loading**



**Dimensional**



<b>Specification</b>	
<b>Basic specification</b>	
Name	Under Ride Lifting Robot R1000LT
Rated load	1000 Kg
Self-weight	260 Kg (±10 Kg)
Positioning accuracy	±10 mm
Jacking height	60 mm
Dimension (L x W x H)	1280 x 800 x 420 mm (excluding anti-collision strip)
<b>Moving performance</b>	
Driving mode	Servo motor / two-wheel differential drive
control mode	Manual/Automatic
Form of motion	Horizontal linear motion
Unloading max Operating speed	1.7m/s
Full load Operating speed	0.8m/s
Jacking time	≤10s
Orientation accuracy	±0.5°
Acceleration time (no load)	3S
Acceleration time (full load)	5S
Body rotation speed (90 degrees)	≤1.5s
Body rotation speed (180 degrees)	≤3/s
Orientation accuracy	±0.5°
Acceleration time (no load)	3S
<b>Battery performance</b>	
Driving voltage	DC48V
Battery capacity	40Ah
Battery type	Lithium iron phosphate
Battery life	1500 cycles, capacity ≥ 80%
Endurance time	More than 8h
Charging time	≤1.5h
Charging mode (optional)	Off line charging / automatic charging
<b>Safety protection</b>	
Anti-collision mode	Lidar obstacle avoidance
	Ultrasonic obstacle avoidance / infrared obstacle avoidance
	Front and rear crash strips to avoid obstacles
Ultrasonic obstacle avoidance / infrared obstacle avoidance	Front and rear emergency stop buttons